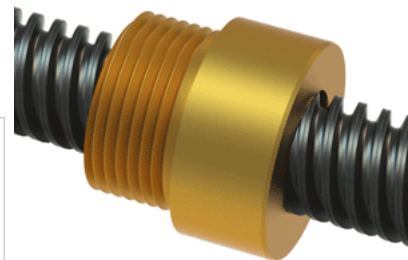


PowerAC 5/8"-2 2/3 RA w/Bronze Nut

Call 800-321-7800 or visit us online at www.nookindustries.com to configure and order your PowerAC 5/8"-2 2/3 RA w/Bronze Nut today!



Rolled Inch Acme Screw

Product Info

Screw Code	063-RA
Thread Direction	RH
Screw Material	4140 Series

Details

Lead [in]	0.375
Starts	3
Pitch [in]	0.125
Turns Per Inch	2.667
Threads per Inch	8
Thread Code	063
Form	2C
End Code for Types 1,2,3,5 [* Journals may show tracings of the thread]	10
End Code for Type 4 [* Journals may show tracings of the thread]	6

Dimensions

A - Root Diameter Minimum [in]	0.457
D - Nominal Rod Diameter [in]	0.625

Part Numbers

3 ft. Part Number	11063
6 ft. Part Number	12063
12 ft. Part Number	13063
20 ft. Part Number	

Performance Specifications

Lead Accuracy +/- [in/in]	0.0003
---------------------------	--------

Weight

Screw Weight [lb./ft.]	0.84
------------------------	------

Inch Acme Nut with Optional Flange

Product Info

Part Number	20063
Thread Direction	RH
Type	Bronze

Details

Lead [in]	0.375
Starts	3
Pitch [in]	0.125
Turns Per Inch	2.67
Lash (Maximum Axial) [in]	0.010
Nominal Rod Diameter [in]	0.625
Threads per Inch	8
Thread Code	063
Form	2C

Dimensions

B [in]	1.00
C [in]	1.13
E [in]	0.50
F (n) Dia. [in]	(4) .266
F BCD [in]	2.090
G [in]	0.53
H [in]	2.60
J [in]	.937-16

Forces and Torques

Torque to Raise 1 lb. [in-lb]	0.100
-------------------------------	-------

Flange Part Numbers

Flange No-Lash Part Number	
Flange Part Number	FLG7570

Weight

Flange Weight [lb]	0.77
Nut Weight [lb]	0.22

Performance Specifications

Efficiency [%]	60
Lead Accuracy +/- [in/in]	0.0003
Dynamic Load Capacity [lb]	1953
Static Load Capacity [lb]	6250