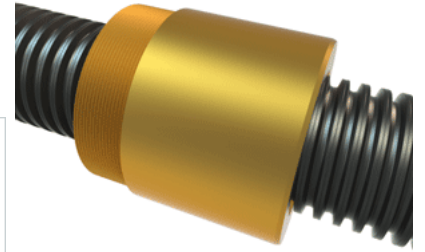


PowerAC 5"-1 1/2 RA w/Bronze Nut

Call 800-321-7800 or visit us online at www.nookindustries.com to configure and order your PowerAC 5"-1 1/2 RA w/Bronze Nut today!



Rolled Inch Acme Screw

Product Info

Screw Code	552-RA
Thread Direction	RH
Screw Material	4140 Series

Details

Lead [in]	0.667
Starts	1
Pitch [in]	0.667
Turns Per Inch	1.5
Threads per Inch	1.5
Thread Code	552
Form	2G
End Code for Types 1,2,3,5 [* Journals may show tracings of the thread]	105
End Code for Type 4 [* Journals may show tracings of the thread]	67

Dimensions

A - Root Diameter Minimum [in]	
D - Nominal Rod Diameter [in]	5.000

Part Numbers

3 ft. Part Number	
6 ft. Part Number	12552
12 ft. Part Number	13552
20 ft. Part Number	10552

Performance Specifications

Lead Accuracy +/- [in/in]	0.0006
---------------------------	--------

Weight

Screw Weight [lb./ft.]	57.50
------------------------	-------

Inch Acme Nut with Optional Flange

Product Info

Part Number	20552
Thread Direction	RH
Type	Bronze

Details

Lead [in]	0.667
Starts	1
Pitch [in]	0.667
Turns Per Inch	1.5
Lash (Maximum Axial) [in]	0.022
Nominal Rod Diameter [in]	5.000
Threads per Inch	1.5
Thread Code	552
Form	2G

Dimensions

B [in]	7.50
C [in]	7.50
E [in]	2.00
F (n) Dia. [in]	(8) 1.25
F BCD [in]	10.000
G [in]	2.02
H [in]	12.00
J [in]	7.066-8

Forces and Torques

Torque to Raise 1 lb. [in-lb]	0.398
-------------------------------	-------

Flange Part Numbers

Flange No-Lash Part Number	73552
Flange Part Number	75000

Weight

Flange Weight [lb]	110.00
Nut Weight [lb]	60.59

Performance Specifications

Efficiency [%]	26
Lead Accuracy +/- [in/in]	0.0006
Dynamic Load Capacity [lb]	145000
Static Load Capacity [lb]	470000