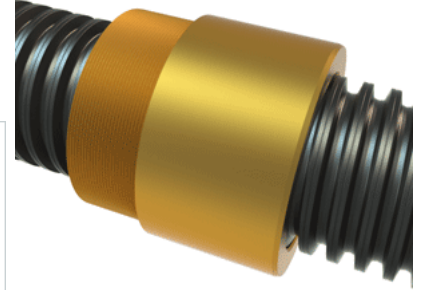


PowerAC 4 1/2"-1 1/2 RA w/Bronze Nut

Call 800-321-7800 or visit us online at www.nookindustries.com to configure and order your PowerAC 4 1/2"-1 1/2 RA w/Bronze Nut today!



Rolled Inch Acme Screw

Product Info

| | |
|------------------|-------------|
| Screw Code | 452-RA |
| Thread Direction | RH |
| Screw Material | 4140 Series |

Details

| | |
|---|-------|
| Lead [in] | 0.667 |
| Starts | 1 |
| Pitch [in] | 0.667 |
| Turns Per Inch | 1.5 |
| Threads per Inch | 1.5 |
| Thread Code | 452 |
| Form | 2G |
| End Code for Types 1,2,3,5 [* Journals may show tracings of the thread] | 95 |
| End Code for Type 4 [* Journals may show tracings of the thread] | 55 |

Dimensions

| | |
|--------------------------------|-------|
| A - Root Diameter Minimum [in] | |
| D - Nominal Rod Diameter [in] | 4.500 |

Part Numbers

| | |
|--------------------|-------|
| 3 ft. Part Number | |
| 6 ft. Part Number | 12452 |
| 12 ft. Part Number | 13452 |
| 20 ft. Part Number | 10452 |

Performance Specifications

| | |
|---------------------------|--------|
| Lead Accuracy +/- [in/in] | 0.0006 |
|---------------------------|--------|

Weight

| | |
|------------------------|-------|
| Screw Weight [lb./ft.] | 45.00 |
|------------------------|-------|

Inch Acme Nut with Optional Flange

Product Info

| | |
|------------------|--------|
| Part Number | 20452 |
| Thread Direction | RH |
| Type | Bronze |

Details

| | |
|---------------------------|-------|
| Lead [in] | 0.667 |
| Starts | 1 |
| Pitch [in] | 0.667 |
| Turns Per Inch | 1.5 |
| Lash (Maximum Axial) [in] | 0.022 |
| Nominal Rod Diameter [in] | 4.500 |
| Threads per Inch | 1.5 |
| Thread Code | 452 |
| Form | 2G |

Dimensions

| | |
|-----------------|----------|
| B [in] | 5.50 |
| C [in] | 6.00 |
| E [in] | 2.00 |
| F (n) Dia. [in] | (6) 1.03 |
| F BCD [in] | 8.000 |
| G [in] | 2.02 |
| H [in] | 9.75 |
| J [in] | 5.497-12 |

Forces and Torques

| | |
|-------------------------------|-------|
| Torque to Raise 1 lb. [in-lb] | 0.379 |
|-------------------------------|-------|

Flange Part Numbers

| | |
|----------------------------|---------|
| Flange No-Lash Part Number | 73452 |
| Flange Part Number | FLG3307 |

Weight

| | |
|--------------------|-------|
| Flange Weight [lb] | 26.00 |
| Nut Weight [lb] | 25.82 |

Performance Specifications

| | |
|----------------------------|--------|
| Efficiency [%] | 28 |
| Lead Accuracy +/- [in/in] | 0.0006 |
| Dynamic Load Capacity [lb] | 100000 |
| Static Load Capacity [lb] | 320000 |