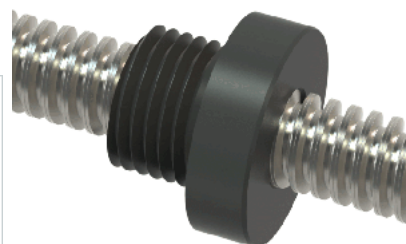
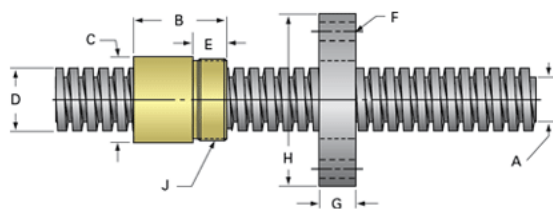


## PowerAC 3/8"-12 RS w/Plastic Nut

Call 800-321-7800 or visit us online at [www.nookindustries.com](http://www.nookindustries.com) to configure and order your PowerAC 3/8"-12 RS w/Plastic Nut today!



### Rolled Inch Acme Screw

#### Product Info

Screw Code	032-RS
Thread Direction	RH
Screw Material	300 Series Stainless

#### Details

Lead [in]	0.083
Starts	1
Pitch [in]	0.083
Turns Per Inch	12
Threads per Inch	12
Thread Code	032
Form	2C
End Code for Types 1,2,3,5 [* Journals may show tracings of the thread]	7*
End Code for Type 4 [* Journals may show tracings of the thread]	4

#### Dimensions

A - Root Diameter Minimum [in]	0.263
D - Nominal Rod Diameter [in]	0.375

#### Part Numbers

3 ft. Part Number	91032
6 ft. Part Number	92032
12 ft. Part Number	
20 ft. Part Number	

#### Performance Specifications

Lead Accuracy +/- [in/in]	0.0003
---------------------------	--------

#### Weight

Screw Weight [lb./ft.]	0.29
------------------------	------

### Inch Acme Nut with Optional Flange

#### Product Info

Part Number	30032
Thread Direction	RH
Type	Plastic

#### Details

Lead [in]	0.083
Starts	1
Pitch [in]	0.083
Turns Per Inch	12
Lash (Maximum Axial) [in]	0.006
Nominal Rod Diameter [in]	0.375
Threads per Inch	12
Thread Code	032
Form	2C

#### Dimensions

B [in]	0.62
C [in]	0.68
E [in]	0.38
F (n) Dia. [in]	(4) .270
F BCD [in]	1.250
G [in]	0.41
H [in]	1.61
J [in]	.562-18

#### Forces and Torques

Torque to Raise 1 lb. [in-lb]	0.031
-------------------------------	-------

#### Flange Part Numbers

Flange No-Lash Part Number	
Flange Part Number	70160

#### Weight

Flange Weight [lb]	0.23
Nut Weight [lb]	0.01

#### Performance Specifications

Efficiency [%]	43
Lead Accuracy +/- [in/in]	0.0003
Dynamic Load Capacity [lb]	351
Static Load Capacity [lb]	351