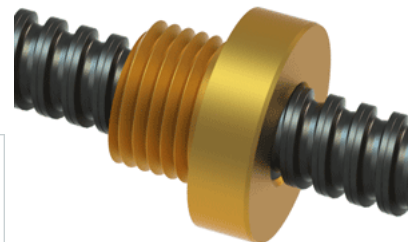


PowerAC 3/8"-8 RA w/Bronze Nut

Call 800-321-7800 or visit us online at www.nookindustries.com to configure and order your PowerAC 3/8"-8 RA w/Bronze Nut today!



Rolled Inch Acme Screw

Product Info

| | |
|------------------|-------------|
| Screw Code | 038-RA |
| Thread Direction | RH |
| Screw Material | 4140 Series |

Details

| | |
|---|-------|
| Lead [in] | 0.125 |
| Starts | 1 |
| Pitch [in] | 0.125 |
| Turns Per Inch | 8 |
| Threads per Inch | 8 |
| Thread Code | 038 |
| Form | Stub |
| End Code for Types 1,2,3,5 [* Journals may show tracings of the thread] | 7 |
| End Code for Type 4 [* Journals may show tracings of the thread] | 4 |

Dimensions

| | |
|--------------------------------|-------|
| A - Root Diameter Minimum [in] | 0.278 |
| D - Nominal Rod Diameter [in] | 0.375 |

Part Numbers

| | |
|--------------------|-------|
| 3 ft. Part Number | 11038 |
| 6 ft. Part Number | 12038 |
| 12 ft. Part Number | |
| 20 ft. Part Number | |

Performance Specifications

| | |
|---------------------------|--------|
| Lead Accuracy +/- [in/in] | 0.0003 |
|---------------------------|--------|

Weight

| | |
|------------------------|------|
| Screw Weight [lb./ft.] | 0.29 |
|------------------------|------|

Inch Acme Nut with Optional Flange

Product Info

| | |
|------------------|--------|
| Part Number | 20038 |
| Thread Direction | RH |
| Type | Bronze |

Details

| | |
|---------------------------|-------|
| Lead [in] | 0.125 |
| Starts | 1 |
| Pitch [in] | 0.125 |
| Turns Per Inch | 8 |
| Lash (Maximum Axial) [in] | 0.009 |
| Nominal Rod Diameter [in] | 0.375 |
| Threads per Inch | 8 |
| Thread Code | 038 |
| Form | Stub |

Dimensions

| | |
|-----------------|----------|
| B [in] | 0.62 |
| C [in] | 0.68 |
| E [in] | 0.38 |
| F (n) Dia. [in] | (4) .266 |
| F BCD [in] | 1.250 |
| G [in] | 0.41 |
| H [in] | 1.61 |
| J [in] | .562-18 |

Forces and Torques

| | |
|-------------------------------|-------|
| Torque to Raise 1 lb. [in-lb] | 0.042 |
|-------------------------------|-------|

Flange Part Numbers

| | |
|----------------------------|-------|
| Flange No-Lash Part Number | |
| Flange Part Number | 70160 |

Weight

| | |
|--------------------|------|
| Flange Weight [lb] | 0.23 |
| Nut Weight [lb] | 0.05 |

Performance Specifications

| | |
|----------------------------|--------|
| Efficiency [%] | 48 |
| Lead Accuracy +/- [in/in] | 0.0003 |
| Dynamic Load Capacity [lb] | 703 |
| Static Load Capacity [lb] | 2250 |