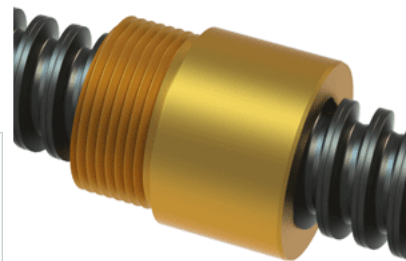


PowerAC 3/4"-5 RA w/Bronze Nut

Call 800-321-7800 or visit us online at www.nookindustries.com to configure and order your PowerAC 3/4"-5 RA w/Bronze Nut today!



Rolled Inch Acme Screw

Product Info

Screw Code	075-RA
Thread Direction	RH
Screw Material	4140 Series

Details

Lead [in]	0.200
Starts	1
Pitch [in]	0.200
Turns Per Inch	5
Threads per Inch	5
Thread Code	075
Form	2C
End Code for Types 1,2,3,5 [* Journals may show tracings of the thread]	12
End Code for Type 4 [* Journals may show tracings of the thread]	8

Dimensions

A - Root Diameter Minimum [in]	0.502
D - Nominal Rod Diameter [in]	0.750

Part Numbers

3 ft. Part Number	11075
6 ft. Part Number	12075
12 ft. Part Number	13075
20 ft. Part Number	

Performance Specifications

Lead Accuracy +/- [in/in]	0.0003
---------------------------	--------

Weight

Screw Weight [lb./ft.]	1.23
------------------------	------

Inch Acme Nut with Optional Flange

Product Info

Part Number	20075
Thread Direction	RH
Type	Bronze

Details

Lead [in]	0.200
Starts	1
Pitch [in]	0.200
Turns Per Inch	5
Lash (Maximum Axial) [in]	0.009
Nominal Rod Diameter [in]	0.750
Threads per Inch	5
Thread Code	075
Form	2C

Dimensions

B [in]	1.25
C [in]	1.13
E [in]	0.50
F (n) Dia. [in]	(4) .266
F BCD [in]	2.090
G [in]	0.53
H [in]	2.63
J [in]	1.000-18

Forces and Torques

Torque to Raise 1 lb. [in-lb]	0.080
-------------------------------	-------

Flange Part Numbers

Flange No-Lash Part Number	73262
Flange Part Number	70262

Weight

Flange Weight [lb]	0.78
Nut Weight [lb]	0.24

Performance Specifications

Efficiency [%]	40
Lead Accuracy +/- [in/in]	0.0003
Dynamic Load Capacity [lb]	2812
Static Load Capacity [lb]	9000