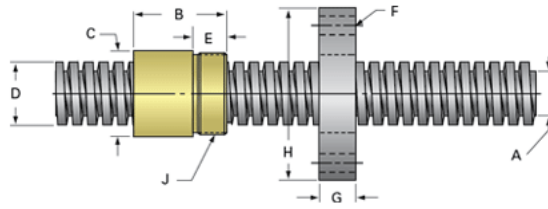
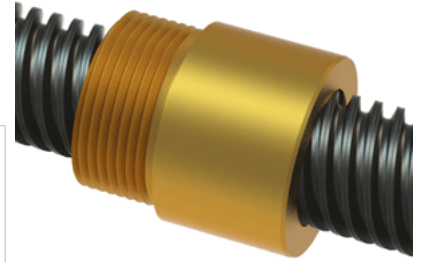


## PowerAC 3/4"-2 RA w/Bronze Nut

Call 800-321-7800 or visit us online at [www.nookindustries.com](http://www.nookindustries.com) to configure and order your PowerAC 3/4"-2 RA w/Bronze Nut today!



### Rolled Inch Acme Screw

#### Product Info

Screw Code	072-RA
Thread Direction	RH
Screw Material	1018 Series

#### Details

Lead [in]	0.500
Starts	4
Pitch [in]	0.125
Turns Per Inch	2
Threads per Inch	8
Thread Code	072
Form	2C
End Code for Types 1,2,3,5 [* Journals may show tracings of the thread]	12
End Code for Type 4 [* Journals may show tracings of the thread]	8

#### Dimensions

A - Root Diameter Minimum [in]	0.581
D - Nominal Rod Diameter [in]	0.750

#### Part Numbers

3 ft. Part Number	11072
6 ft. Part Number	12072
12 ft. Part Number	13072
20 ft. Part Number	

#### Performance Specifications

Lead Accuracy +/- [in/in]	0.0003
---------------------------	--------

#### Weight

Screw Weight [lb./ft.]	1.18
------------------------	------

### Inch Acme Nut with Optional Flange

#### Product Info

Part Number	20072
Thread Direction	RH
Type	Bronze

#### Details

Lead [in]	0.500
Starts	4
Pitch [in]	0.125
Turns Per Inch	2
Lash (Maximum Axial) [in]	0.010
Nominal Rod Diameter [in]	0.750
Threads per Inch	8
Thread Code	072
Form	2C

#### Dimensions

B [in]	1.25
C [in]	1.12
E [in]	0.50
F (n) Dia. [in]	(4) .266
F BCD [in]	2.090
G [in]	0.53
H [in]	2.63
J [in]	1.000-18

#### Forces and Torques

Torque to Raise 1 lb. [in-lb]	0.129
-------------------------------	-------

#### Flange Part Numbers

Flange No-Lash Part Number	73262
Flange Part Number	70262

#### Weight

Flange Weight [lb]	0.78
Nut Weight [lb]	0.23

#### Performance Specifications

Efficiency [%]	62
Lead Accuracy +/- [in/in]	0.0003
Dynamic Load Capacity [lb]	2812
Static Load Capacity [lb]	9000