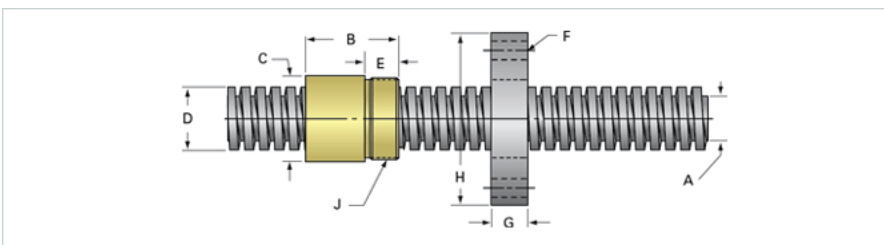
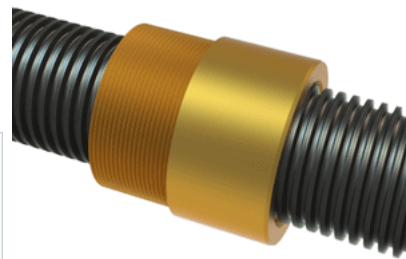


## PowerAC 2 1/2"-4 RA w/Bronze Nut

Call 800-321-7800 or visit us online at [www.nookindustries.com](http://www.nookindustries.com) to configure and order your PowerAC 2 1/2"-4 RA w/Bronze Nut today!



### Rolled Inch Acme Screw

#### Product Info

Screw Code	254-RA
Thread Direction	RH
Screw Material	4140 Series

#### Details

Lead [in]	0.250
Starts	1
Pitch [in]	0.250
Turns Per Inch	4
Threads per Inch	4
Thread Code	254
Form	2C
End Code for Types 1,2,3,5 [* Journals may show tracings of the thread]	50
End Code for Type 4 [* Journals may show tracings of the thread]	32

#### Dimensions

A - Root Diameter Minimum [in]	2.193
D - Nominal Rod Diameter [in]	2.500

#### Part Numbers

3 ft. Part Number	11254
6 ft. Part Number	12254
12 ft. Part Number	13254
20 ft. Part Number	

#### Performance Specifications

Lead Accuracy +/- [in/in]	0.0003
---------------------------	--------

#### Weight

Screw Weight [lb./ft.]	14.38
------------------------	-------

### Inch Acme Nut with Optional Flange

#### Product Info

Part Number	20254
Thread Direction	RH
Type	Bronze

#### Details

Lead [in]	0.250
Starts	1
Pitch [in]	0.250
Turns Per Inch	4
Lash (Maximum Axial) [in]	0.012
Nominal Rod Diameter [in]	2.500
Threads per Inch	4
Thread Code	254
Form	2C

#### Dimensions

B [in]	3.38
C [in]	3.38
E [in]	1.56
F (n) Dia. [in]	(6) .656
F BCD [in]	4.380
G [in]	1.58
H [in]	5.38
J [in]	3.137-12

#### Forces and Torques

Torque to Raise 1 lb. [in-lb]	0.199
-------------------------------	-------

#### Flange Part Numbers

Flange No-Lash Part Number	73540
Flange Part Number	FLG7574

#### Weight

Flange Weight [lb]	9.88
Nut Weight [lb]	4.55

#### Performance Specifications

Efficiency [%]	20
Lead Accuracy +/- [in/in]	0.0003
Dynamic Load Capacity [lb]	31250
Static Load Capacity [lb]	100000