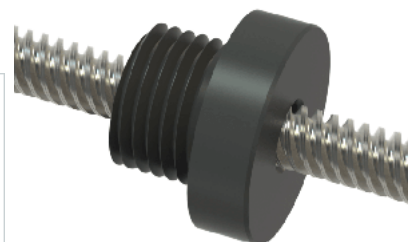


PowerAC 1/4"-4 RS w/Plastic Nut

Call 800-321-7800 or visit us online at www.nookindustries.com to configure and order your PowerAC 1/4"-4 RS w/Plastic Nut today!



Rolled Inch Acme Screw

Product Info

Screw Code	024-RS
Thread Direction	RH
Screw Material	300 Series Stainless

Details

Lead [in]	0.250
Starts	4
Pitch [in]	0.062
Turns Per Inch	4
Threads per Inch	16
Thread Code	024
Form	2C
End Code for Types 1,2,3,5 [* Journals may show tracings of the thread]	3
End Code for Type 4 [* Journals may show tracings of the thread]	2

Dimensions

A - Root Diameter Minimum [in]	0.162
D - Nominal Rod Diameter [in]	0.250

Part Numbers

3 ft. Part Number	91024
6 ft. Part Number	92024
12 ft. Part Number	
20 ft. Part Number	

Performance Specifications

Lead Accuracy +/- [in/in]	0.0003
---------------------------	--------

Weight

Screw Weight [lb./ft.]	0.13
------------------------	------

Inch Acme Nut with Optional Flange

Product Info

Part Number	30024
Thread Direction	RH
Type	Plastic

Details

Lead [in]	0.250
Starts	4
Pitch [in]	0.062
Turns Per Inch	4
Lash (Maximum Axial) [in]	0.007
Nominal Rod Diameter [in]	0.250
Threads per Inch	16
Thread Code	024
Form	2C

Dimensions

B [in]	0.62
C [in]	0.68
E [in]	0.38
F (n) Dia. [in]	(4) .266
F BCD [in]	1.250
G [in]	0.41
H [in]	1.61
J [in]	.562-18

Forces and Torques

Torque to Raise 1 lb. [in-lb]	0.053
-------------------------------	-------

Flange Part Numbers

Flange No-Lash Part Number	
Flange Part Number	70160

Weight

Flange Weight [lb]	0.23
Nut Weight [lb]	0.06

Performance Specifications

Efficiency [%]	75
Lead Accuracy +/- [in/in]	0.0003
Dynamic Load Capacity [lb]	156
Static Load Capacity [lb]	156