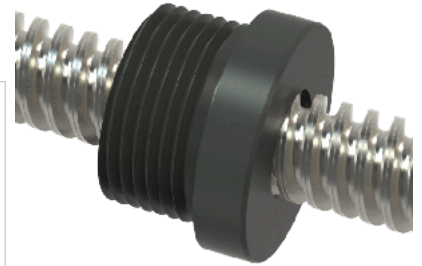
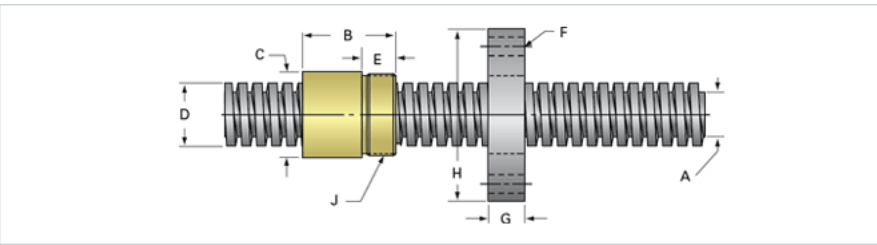


PowerAC 1/2"-5 RS w/Plastic Nut

Call 800-321-7800 or visit us online at www.nookindustries.com to configure and order your PowerAC 1/2"-5 RS w/Plastic Nut today!



Rolled Inch Acme Screw

Product Info

Screw Code	055-RS
Thread Direction	RH
Screw Material	300 Series Stainless

Details

Lead [in]	0.200
Starts	2
Pitch [in]	0.100
Turns Per Inch	5
Threads per Inch	10
Thread Code	055
Form	Stub
End Code for Types 1,2,3,5 [* Journals may show tracings of the thread]	9
End Code for Type 4 [* Journals may show tracings of the thread]	6

Dimensions

A - Root Diameter Minimum [in]	0.391
D - Nominal Rod Diameter [in]	0.500

Part Numbers

3 ft. Part Number	91055
6 ft. Part Number	92055
12 ft. Part Number	93055
20 ft. Part Number	

Performance Specifications

Lead Accuracy +/- [in/in]	0.0003
---------------------------	--------

Weight

Screw Weight [lb./ft.]	0.53
------------------------	------

Inch Acme Nut with Optional Flange

Product Info

Part Number	30055
Thread Direction	RH
Type	Plastic

Details

Lead [in]	0.200
Starts	2
Pitch [in]	0.100
Turns Per Inch	5
Lash (Maximum Axial) [in]	0.009
Nominal Rod Diameter [in]	0.500
Threads per Inch	10
Thread Code	055
Form	Stub

Dimensions

B [in]	0.75
C [in]	1.12
E [in]	0.50
F (n) Dia. [in]	(4) .266
F BCD [in]	2.090
G [in]	0.53
H [in]	2.60
J [in]	.937-16

Forces and Torques

Torque to Raise 1 lb. [in-lb]	0.056
-------------------------------	-------

Flange Part Numbers

Flange No-Lash Part Number	
Flange Part Number	FLG7570

Weight

Flange Weight [lb]	0.77
Nut Weight [lb]	0.03

Performance Specifications

Efficiency [%]	57
Lead Accuracy +/- [in/in]	0.0003
Dynamic Load Capacity [lb]	625
Static Load Capacity [lb]	625