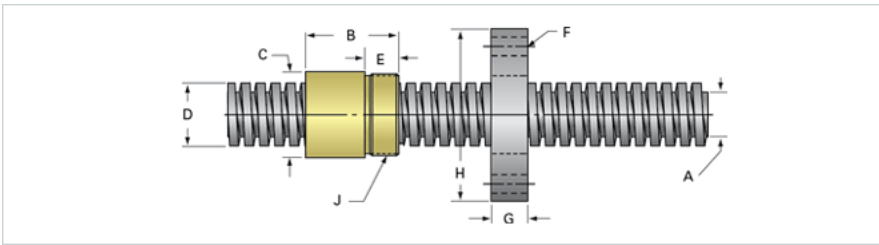
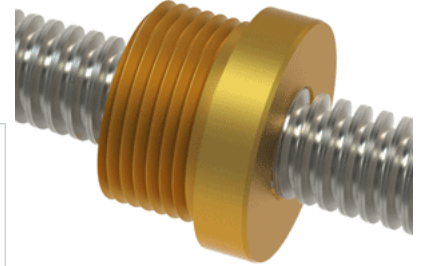


## PowerAC 1/2"-10 RS w/Bronze Nut

Call 800-321-7800 or visit us online at [www.nookindustries.com](http://www.nookindustries.com) to configure and order your PowerAC 1/2"-10 RS w/Bronze Nut today!



### Rolled Inch Acme Screw

#### Product Info

Screw Code	050-RS
Thread Direction	RH
Screw Material	300 Series Stainless

#### Details

Lead [in]	0.100
Starts	1
Pitch [in]	0.100
Turns Per Inch	10
Threads per Inch	10
Thread Code	050
Form	2C
End Code for Types 1,2,3,5 [* Journals may show tracings of the thread]	9
End Code for Type 4 [* Journals may show tracings of the thread]	6*

#### Dimensions

A - Root Diameter Minimum [in]	0.359
D - Nominal Rod Diameter [in]	0.500

#### Part Numbers

3 ft. Part Number	91050
6 ft. Part Number	92050
12 ft. Part Number	93050
20 ft. Part Number	

#### Performance Specifications

Lead Accuracy +/- [in/in]	0.0003
---------------------------	--------

#### Weight

Screw Weight [lb./ft.]	0.53
------------------------	------

### Inch Acme Nut with Optional Flange

#### Product Info

Part Number	20050
Thread Direction	RH
Type	Bronze

#### Details

Lead [in]	0.100
Starts	1
Pitch [in]	0.100
Turns Per Inch	10
Lash (Maximum Axial) [in]	0.007
Nominal Rod Diameter [in]	0.500
Threads per Inch	10
Thread Code	050
Form	2C

#### Dimensions

B [in]	0.75
C [in]	1.12
E [in]	0.50
F (n) Dia. [in]	(4) .266
F BCD [in]	2.090
G [in]	0.53
H [in]	2.60
J [in]	.937-16

#### Forces and Torques

Torque to Raise 1 lb. [in-lb]	0.047
-------------------------------	-------

#### Flange Part Numbers

Flange No-Lash Part Number	
Flange Part Number	FLG7570

#### Weight

Flange Weight [lb]	0.77
Nut Weight [lb]	0.18

#### Performance Specifications

Efficiency [%]	34
Lead Accuracy +/- [in/in]	0.0003
Dynamic Load Capacity [lb]	1250
Static Load Capacity [lb]	4000