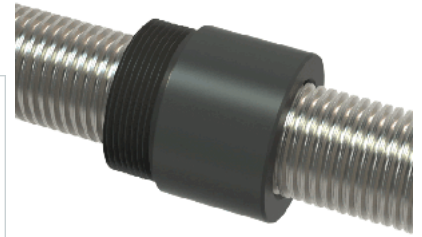


PowerAC 1"-10 RS w/Plastic Nut

Call 800-321-7800 or visit us online at www.nookindustries.com to configure and order your PowerAC 1"-10 RS w/Plastic Nut today!



Rolled Inch Acme Screw

Product Info

Screw Code	110-RS
Thread Direction	RH
Screw Material	300 Series Stainless

Details

Lead [in]	0.100
Starts	1
Pitch [in]	0.100
Turns Per Inch	10
Threads per Inch	10
Thread Code	110
Form	2C
End Code for Types 1,2,3,5 [* Journals may show tracings of the thread]	20
End Code for Type 4 [* Journals may show tracings of the thread]	12

Dimensions

A - Root Diameter Minimum [in]	0.857
D - Nominal Rod Diameter [in]	1.000

Part Numbers

3 ft. Part Number	91110
6 ft. Part Number	92110
12 ft. Part Number	93110
20 ft. Part Number	

Performance Specifications

Lead Accuracy +/- [in/in]	0.0003
---------------------------	--------

Weight

Screw Weight [lb./ft.]	2.10
------------------------	------

Inch Acme Nut with Optional Flange

Product Info

Part Number	30110
Thread Direction	RH
Type	Plastic

Details

Lead [in]	0.100
Starts	1
Pitch [in]	0.100
Turns Per Inch	10
Lash (Maximum Axial) [in]	0.008
Nominal Rod Diameter [in]	1.000
Threads per Inch	10
Thread Code	110
Form	2C

Dimensions

B [in]	1.50
C [in]	1.50
E [in]	0.50
F (n) Dia. [in]	(4) .266
F BCD [in]	2.260
G [in]	0.52
H [in]	2.76
J [in]	1.375-16

Forces and Torques

Torque to Raise 1 lb. [in-lb]	0.065
-------------------------------	-------

Flange Part Numbers

Flange No-Lash Part Number	73275
Flange Part Number	FLG8281

Weight

Flange Weight [lb]	0.85
Nut Weight [lb]	0.07

Performance Specifications

Efficiency [%]	24
Lead Accuracy +/- [in/in]	0.0003
Dynamic Load Capacity [lb]	2500
Static Load Capacity [lb]	2500