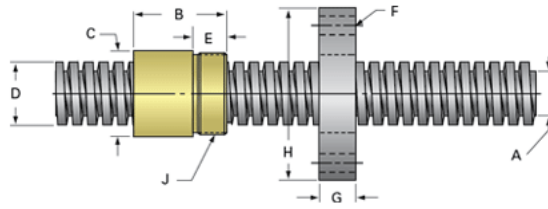
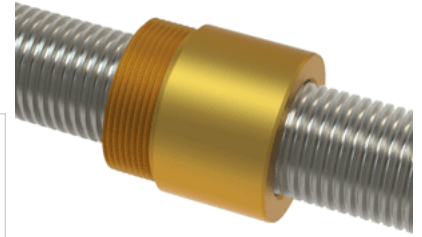


## PowerAC 1"-10 RS w/Bronze Nut

Call 800-321-7800 or visit us online at [www.nookindustries.com](http://www.nookindustries.com) to configure and order your PowerAC 1"-10 RS w/Bronze Nut today!



### Rolled Inch Acme Screw

#### Product Info

Screw Code	110-RS
Thread Direction	RH
Screw Material	300 Series Stainless

#### Details

Lead [in]	0.100
Starts	1
Pitch [in]	0.100
Turns Per Inch	10
Threads per Inch	10
Thread Code	110
Form	2C
End Code for Types 1,2,3,5 [* Journals may show tracings of the thread]	20
End Code for Type 4 [* Journals may show tracings of the thread]	12

#### Dimensions

A - Root Diameter Minimum [in]	0.857
D - Nominal Rod Diameter [in]	1.000

#### Part Numbers

3 ft. Part Number	91110
6 ft. Part Number	92110
12 ft. Part Number	93110
20 ft. Part Number	

#### Performance Specifications

Lead Accuracy +/- [in/in]	0.0003
---------------------------	--------

#### Weight

Screw Weight [lb./ft.]	2.10
------------------------	------

### Inch Acme Nut with Optional Flange

#### Product Info

Part Number	20110
Thread Direction	RH
Type	Bronze

#### Details

Lead [in]	0.100
Starts	1
Pitch [in]	0.100
Turns Per Inch	10
Lash (Maximum Axial) [in]	0.008
Nominal Rod Diameter [in]	1.000
Threads per Inch	10
Thread Code	110
Form	2C

#### Dimensions

B [in]	1.50
C [in]	1.50
E [in]	0.50
F (n) Dia. [in]	(4) .266
F BCD [in]	2.260
G [in]	0.52
H [in]	2.76
J [in]	1.375-16

#### Forces and Torques

Torque to Raise 1 lb. [in-lb]	0.078
-------------------------------	-------

#### Flange Part Numbers

Flange No-Lash Part Number	73275
Flange Part Number	FLG8281

#### Weight

Flange Weight [lb]	0.85
Nut Weight [lb]	0.47

#### Performance Specifications

Efficiency [%]	20
Lead Accuracy +/- [in/in]	0.0003
Dynamic Load Capacity [lb]	5000
Static Load Capacity [lb]	16000