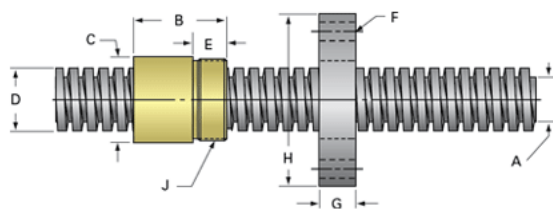
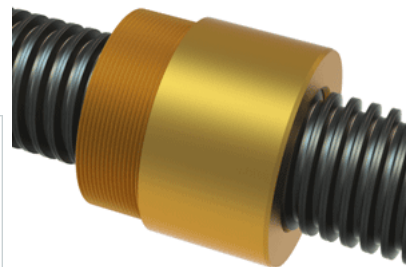


PowerAC 1 3/4"-4 RA w/Bronze Nut

Call 800-321-7800 or visit us online at www.nookindustries.com to configure and order your PowerAC 1 3/4"-4 RA w/Bronze Nut today!



Rolled Inch Acme Screw

Product Info

Screw Code	174-RA
Thread Direction	RH
Screw Material	4140 Series

Details

Lead [in]	0.250
Starts	1
Pitch [in]	0.250
Turns Per Inch	4
Threads per Inch	4
Thread Code	174
Form	2C
End Code for Types 1,2,3,5 [* Journals may show tracings of the thread]	35
End Code for Type 4 [* Journals may show tracings of the thread]	19

Dimensions

A - Root Diameter Minimum [in]	1.427
D - Nominal Rod Diameter [in]	1.750

Part Numbers

3 ft. Part Number	11174
6 ft. Part Number	12174
12 ft. Part Number	13174
20 ft. Part Number	

Performance Specifications

Lead Accuracy +/- [in/in]	0.0003
---------------------------	--------

Weight

Screw Weight [lb./ft.]	6.97
------------------------	------

Inch Acme Nut with Optional Flange

Product Info

Part Number	20174
Thread Direction	RH
Type	Bronze

Details

Lead [in]	0.250
Starts	1
Pitch [in]	0.250
Turns Per Inch	4
Lash (Maximum Axial) [in]	0.011
Nominal Rod Diameter [in]	1.750
Threads per Inch	4
Thread Code	174
Form	2C

Dimensions

B [in]	2.50
C [in]	2.75
E [in]	0.88
F (n) Dia. [in]	(4) .531
F BCD [in]	4.062
G [in]	0.90
H [in]	4.94
J [in]	2.548-18

Forces and Torques

Torque to Raise 1 lb. [in-lb]	0.153
-------------------------------	-------

Flange Part Numbers

Flange No-Lash Part Number	73500
Flange Part Number	FLG7573

Weight

Flange Weight [lb]	4.73
Nut Weight [lb]	3.05

Performance Specifications

Efficiency [%]	26
Lead Accuracy +/- [in/in]	0.0003
Dynamic Load Capacity [lb]	15312
Static Load Capacity [lb]	49900