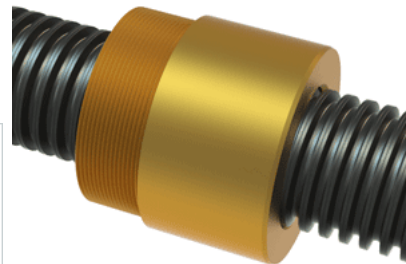


PowerAC 1 3/4"-4 LA w/Bronze Nut

Call 800-321-7800 or visit us online at www.nookindustries.com to configure and order your PowerAC 1 3/4"-4 LA w/Bronze Nut today!



Rolled Inch Acme Screw

Product Info

| | |
|------------------|-------------|
| Screw Code | 174-LA |
| Thread Direction | LH |
| Screw Material | 4140 Series |

Details

| | |
|---|-------|
| Lead [in] | 0.250 |
| Starts | 1 |
| Pitch [in] | 0.250 |
| Turns Per Inch | 4 |
| Threads per Inch | 4 |
| Thread Code | 174 |
| Form | 2C |
| End Code for Types 1,2,3,5 [* Journals may show tracings of the thread] | 35 |
| End Code for Type 4 [* Journals may show tracings of the thread] | 19 |

Dimensions

| | |
|--------------------------------|-------|
| A - Root Diameter Minimum [in] | 1.427 |
| D - Nominal Rod Diameter [in] | 1.750 |

Part Numbers

| | |
|--------------------|-------|
| 3 ft. Part Number | 51174 |
| 6 ft. Part Number | 52174 |
| 12 ft. Part Number | 53174 |
| 20 ft. Part Number | |

Performance Specifications

| | |
|---------------------------|--------|
| Lead Accuracy +/- [in/in] | 0.0003 |
|---------------------------|--------|

Weight

| | |
|------------------------|------|
| Screw Weight [lb./ft.] | 6.97 |
|------------------------|------|

Inch Acme Nut with Optional Flange

Product Info

| | |
|------------------|--------|
| Part Number | 80174 |
| Thread Direction | LH |
| Type | Bronze |

Details

| | |
|---------------------------|-------|
| Lead [in] | 0.250 |
| Starts | 1 |
| Pitch [in] | 0.250 |
| Turns Per Inch | 4 |
| Lash (Maximum Axial) [in] | 0.011 |
| Nominal Rod Diameter [in] | 1.750 |
| Threads per Inch | 4 |
| Thread Code | 174 |
| Form | 2C |

Dimensions

| | |
|-----------------|----------|
| B [in] | 2.50 |
| C [in] | 2.75 |
| E [in] | 0.88 |
| F (n) Dia. [in] | (4) .531 |
| F BCD [in] | 4.062 |
| G [in] | 0.90 |
| H [in] | 4.94 |
| J [in] | 2.548-18 |

Forces and Torques

| | |
|-------------------------------|-------|
| Torque to Raise 1 lb. [in-lb] | 0.153 |
|-------------------------------|-------|

Flange Part Numbers

| | |
|----------------------------|---------|
| Flange No-Lash Part Number | 73500 |
| Flange Part Number | FLG7573 |

Weight

| | |
|--------------------|------|
| Flange Weight [lb] | 4.73 |
| Nut Weight [lb] | 3.05 |

Performance Specifications

| | |
|----------------------------|--------|
| Efficiency [%] | 26 |
| Lead Accuracy +/- [in/in] | 0.0003 |
| Dynamic Load Capacity [lb] | 15312 |
| Static Load Capacity [lb] | 49900 |