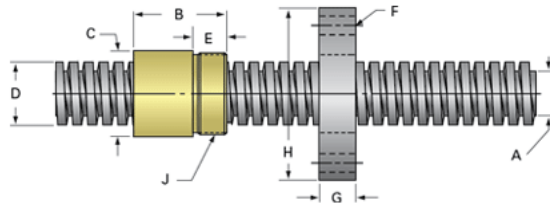
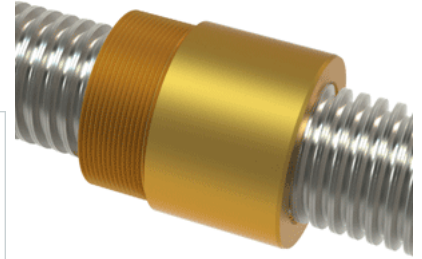


## PowerAC 1 1/2"-5 RS w/Bronze Nut

Call 800-321-7800 or visit us online at [www.nookindustries.com](http://www.nookindustries.com) to configure and order your PowerAC 1 1/2"-5 RS w/Bronze Nut today!



### Rolled Inch Acme Screw

#### Product Info

Screw Code	155-RS
Thread Direction	RH
Screw Material	300 Series Stainless

#### Details

Lead [in]	0.200
Starts	1
Pitch [in]	0.200
Turns Per Inch	5
Threads per Inch	5
Thread Code	155
Form	2C
End Code for Types 1,2,3,5 [* Journals may show tracings of the thread]	30
End Code for Type 4 [* Journals may show tracings of the thread]	19

#### Dimensions

A - Root Diameter Minimum [in]	1.249
D - Nominal Rod Diameter [in]	1.500

#### Part Numbers

3 ft. Part Number	91155
6 ft. Part Number	92155
12 ft. Part Number	93155
20 ft. Part Number	

#### Performance Specifications

Lead Accuracy +/- [in/in]	0.0003
---------------------------	--------

#### Weight

Screw Weight [lb./ft.]	4.90
------------------------	------

### Inch Acme Nut with Optional Flange

#### Product Info

Part Number	20155
Thread Direction	RH
Type	Bronze

#### Details

Lead [in]	0.200
Starts	1
Pitch [in]	0.200
Turns Per Inch	5
Lash (Maximum Axial) [in]	0.010
Nominal Rod Diameter [in]	1.500
Threads per Inch	5
Thread Code	155
Form	2C

#### Dimensions

B [in]	2.30
C [in]	2.13
E [in]	0.81
F (n) Dia. [in]	(4) .397
F BCD [in]	3.440
G [in]	0.83
H [in]	4.20
J [in]	1.967-18

#### Forces and Torques

Torque to Raise 1 lb. [in-lb]	0.127
-------------------------------	-------

#### Flange Part Numbers

Flange No-Lash Part Number	73420
Flange Part Number	FLG7572

#### Weight

Flange Weight [lb]	3.19
Nut Weight [lb]	1.35

#### Performance Specifications

Efficiency [%]	25
Lead Accuracy +/- [in/in]	0.0003
Dynamic Load Capacity [lb]	11250
Static Load Capacity [lb]	36000