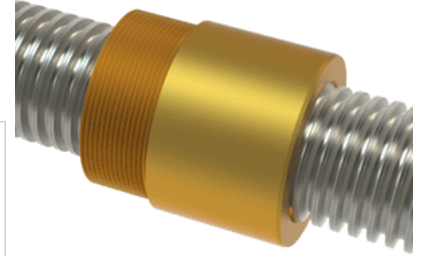


## PowerAC 1 1/2"-5 LS w/Bronze Nut

Call 800-321-7800 or visit us online at [www.nookindustries.com](http://www.nookindustries.com) to configure and order your PowerAC 1 1/2"-5 LS w/Bronze Nut today!



### Rolled Inch Acme Screw

#### Product Info

|                  |                      |
|------------------|----------------------|
| Screw Code       | 155-LS               |
| Thread Direction | LH                   |
| Screw Material   | 300 Series Stainless |

#### Details

|   |       |
|---|-------|
| Lead [in]   | 0.200 |
| Starts  | 1     |
| Pitch [in]  | 0.200 |
| Turns Per Inch  | 5     |
| Threads per Inch  | 5     |
| Thread Code   | 155   |
| Form  | 2C    |
| End Code for Types 1,2,3,5 [* Journals may show tracings of the thread] | 30    |
| End Code for Type 4 [* Journals may show tracings of the thread]        | 19    |

#### Dimensions

|                                |       |
|--------------------------------|-------|
| A - Root Diameter Minimum [in] | 1.249 |
| D - Nominal Rod Diameter [in]  | 1.500 |

#### Part Numbers

|                    |       |
|--------------------|-------|
| 3 ft. Part Number  | 94155 |
| 6 ft. Part Number  | 95155 |
| 12 ft. Part Number | 96155 |
| 20 ft. Part Number | 96155 |

#### Performance Specifications

|                           |        |
|---------------------------|--------|
| Lead Accuracy +/- [in/in] | 0.0003 |
|---------------------------|--------|

#### Weight

|                        |      |
|------------------------|------|
| Screw Weight [lb./ft.] | 4.90 |
|------------------------|------|

### Inch Acme Nut with Optional Flange

#### Product Info

|                  |        |
|------------------|--------|
| Part Number      | 80155  |
| Thread Direction | LH     |
| Type             | Bronze |

#### Details

|                           |       |
|---------------------------|-------|
| Lead [in]                 | 0.200 |
| Starts                    | 1     |
| Pitch [in]                | 0.200 |
| Turns Per Inch            | 5     |
| Lash (Maximum Axial) [in] | 0.010 |
| Nominal Rod Diameter [in] | 1.500 |
| Threads per Inch          | 5     |
| Thread Code               | 155   |
| Form                      | 2C    |

#### Dimensions

|                 |          |
|-----------------|----------|
| B [in]          | 2.30     |
| C [in]          | 2.13     |
| E [in]          | 0.81     |
| F (n) Dia. [in] | (4) .397 |
| F BCD [in]      | 3.440    |
| G [in]          | 0.83     |
| H [in]          | 4.20     |
| J [in]          | 1.967-18 |

#### Forces and Torques

|                               |       |
|-------------------------------|-------|
| Torque to Raise 1 lb. [in-lb] | 0.127 |
|-------------------------------|-------|

#### Flange Part Numbers

|                            |         |
|----------------------------|---------|
| Flange No-Lash Part Number | 73420   |
| Flange Part Number         | FLG7572 |

#### Weight

|                    |      |
|--------------------|------|
| Flange Weight [lb] | 3.19 |
| Nut Weight [lb]    | 1.35 |

#### Performance Specifications

|                            |        |
|----------------------------|--------|
| Efficiency [%]             | 25     |
| Lead Accuracy +/- [in/in]  | 0.0003 |
| Dynamic Load Capacity [lb] | 11250  |
| Static Load Capacity [lb]  | 36000  |