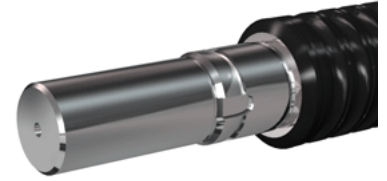
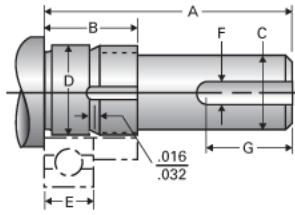


Type 1L, End Code 95

Call 800-321-7800 or visit us online at www.nookindustries.com to configure and order your Type 1L, End Code 95 today!



Product Info

Nominal Bearing Journal Size 95

Dimensions

C [in]	3.500 / 3.499
D [in]	3.7402 / 3.7394
F [in]	0.875
G [in]	6.00
Typical Journal for Single Bearing A [in]	9.60
Typical Journal for Single Bearing B [in]	2.60
Typical Journal for Single Bearing E [in]	1.772
Lock Nut	AN-19
Lock Washer	W-19