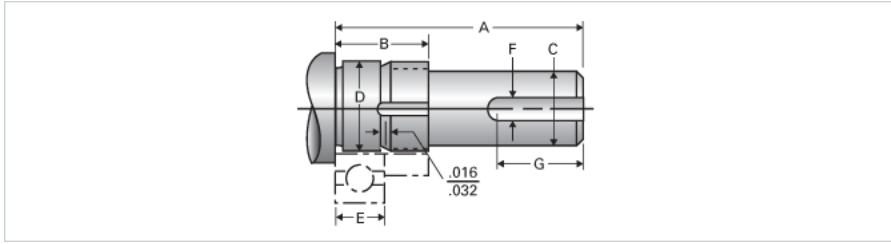
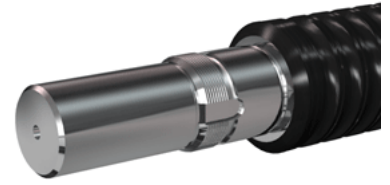


Type 1L, End Code 65

Call 800-321-7800 or visit us online at www.nookindustries.com to configure and order your Type 1L, End Code 65 today!



Product Info	
Nominal Bearing Journal Size	65
Dimensions	
C [in]	2.375 / 2.374
D [in]	2.5591 / 2.5585
F [in]	0.625
G [in]	3.70
Typical Journal for Single Bearing A [in]	6.71
Typical Journal for Single Bearing B [in]	1.96
Typical Journal for Single Bearing E [in]	1.299
Lock Nut	N-13
Lock Washer	W-13