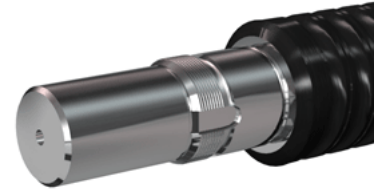
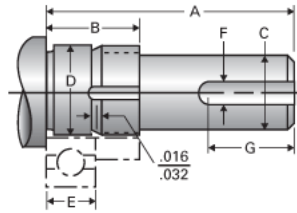


Type 1L, End Code 60

Call 800-321-7800 or visit us online at www.nookindustries.com to configure and order your Type 1L, End Code 60 today!



Product Info

Nominal Bearing Journal Size 60

Dimensions

C [in]	2.250 / 2.249
D [in]	2.3627 / 2.3621
F [in]	0.500
G [in]	2.75
Typical Journal for Single Bearing A [in]	5.56
Typical Journal for Single Bearing B [in]	1.88
Typical Journal for Single Bearing E [in]	1.221
Lock Nut	N-12
Lock Washer	W-12