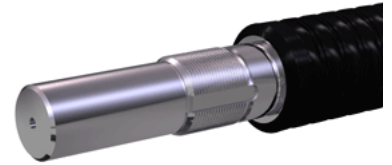
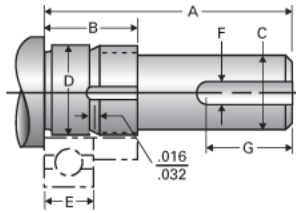


Type 1L, End Code 10

Call 800-321-7800 or visit us online at www.nookindustries.com to configure and order your Type 1L, End Code 10 today!



Product Info

Nominal Bearing Journal Size 10

Dimensions

C [in]	.312 / .311
D [in]	.3939 / .3936
F [in]	0.125
G [in]	0.50
Typical Journal for Single Bearing A [in]	1.37
Typical Journal for Single Bearing B [in]	0.69
Typical Journal for Single Bearing E [in]	0.315
Lock Nut	N-00
Lock Washer	W-00