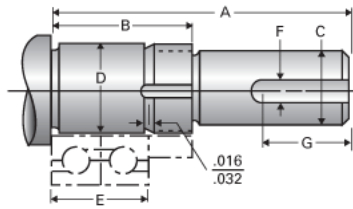


Type 2L, End Code 30

Call 800-321-7800 or visit us online at www.nookindustries.com to configure and order your Type 2L, End Code 30 today!



Product Info

Nominal Bearing Journal Size 30

Dimensions

| | |
|---|--------|
| C Maximum [in] | 1.000 |
| C Minimum [in] | 0.999 |
| D Maximum [in] | 1.1814 |
| D Minimum [in] | 1.1814 |
| F [in] | N/A |
| G [in] | N/A |
| Typical Journal for Single Bearing A [in] | 3.60 |
| Typical Journal for Single Bearing B [in] | 1.79 |
| Typical Journal for Single Bearing E [in] | 1.260 |
| Lock Nut | N-06 |
| Lock Washer | W-06 |