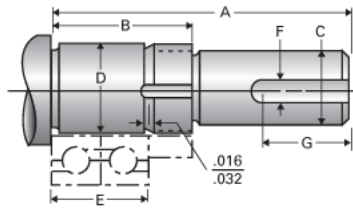


## Type 2L, End Code 25

Call 800-321-7800 or visit us online at [www.nookindustries.com](http://www.nookindustries.com) to configure and order your Type 2L, End Code 25 today!



### Product Info

Nominal Bearing Journal Size 25

### Dimensions

C Maximum [in]	0.750
C Minimum [in]	0.749
D Maximum [in]	0.9846
D Minimum [in]	0.9842
F [in]	N/A
G [in]	N/A
Typical Journal for Single Bearing A [in]	3.27
Typical Journal for Single Bearing B [in]	1.71
Typical Journal for Single Bearing E [in]	1.182
Lock Nut	N-05
Lock Washer	W-05