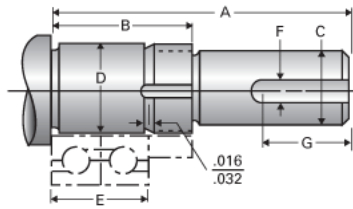


## Type 2L, End Code 12

Call 800-321-7800 or visit us online at [www.nookindustries.com](http://www.nookindustries.com) to configure and order your Type 2L, End Code 12 today!



### Product Info

Nominal Bearing Journal Size 12

### Dimensions

C Maximum [in]	0.406
C Minimum [in]	0.405
D Maximum [in]	0.4726
D Minimum [in]	0.4723
F [in]	N/A
G [in]	N/A
Typical Journal for Single Bearing A [in]	2.50
Typical Journal for Single Bearing B [in]	1.20
Typical Journal for Single Bearing E [in]	0.788
Lock Nut	N-01
Lock Washer	W-01