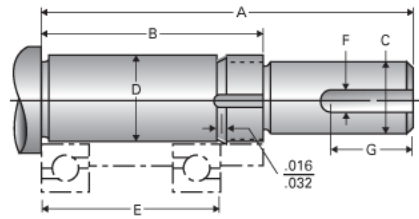


Type 3L, End Code 105

Call 800-321-7800 or visit us online at www.nookindustries.com to configure and order your Type 3L, End Code 105 today!



Product Info

Nominal Bearing Journal Size 105

Dimensions

C Maximum [in]	4.000
C Minimum [in]	3.999
D Maximum [in]	4.1345
D Minimum [in]	4.1338
F [in]	1.00
G [in]	6.75
Typical Journal for Single Bearing A [in]	16.62
Typical Journal for Single Bearing B [in]	8.62
Typical Journal for Single Bearing E [in]	7.716
Lock Nut	AN-21
Lock Washer	W-21