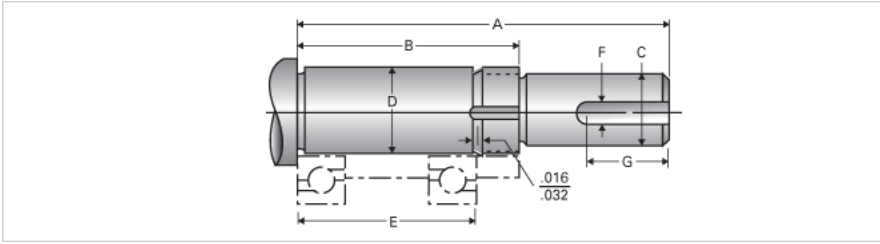


Type 3L, End Code 15

Call 800-321-7800 or visit us online at www.nookindustries.com to configure and order your Type 3L, End Code 15 today!



Product Info

Nominal Bearing Journal Size 15

Dimensions

C Maximum [in]	0.500
C Minimum [in]	0.499
D Maximum [in]	0.5908
D Minimum [in]	0.5905
F [in]	0.13
G [in]	1.00
Typical Journal for Single Bearing A [in]	3.50
Typical Journal for Single Bearing B [in]	2.18
Typical Journal for Single Bearing E [in]	1.732
Lock Nut	N-02
Lock Washer	W-02