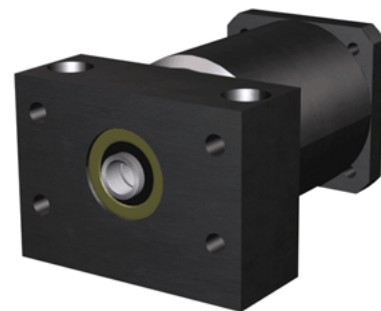


## EZZE-MOUNT EZM-3015-23

Call 800-321-7800 or visit us online at [www.nookindustries.com](http://www.nookindustries.com) to configure and order your EZZE-MOUNT EZM-3015-23 today!



### Product Info

|                                   |             |
|-----------------------------------|-------------|
| Part Number                       | EZM-3015-23 |
| Reference Code                    | U2          |
| Machined End Code                 | 15          |
| Nema Frame Reference              | 23          |
| Nominal Bearing Journal Size [mm] | 15          |

### Dimensions

|                               |             |
|-------------------------------|-------------|
| A [in]                        | 3.50        |
| AA [in]                       | 2.50        |
| AJ [in]                       | 2.625       |
| AK Maximum [in]               | 1.506       |
| AK Minimum [in]               | 1.503       |
| B [in]                        | 2.52        |
| BB [in]                       | 0.19        |
| [in]                          | 2.75        |
| D [in]                        | 3.50        |
| E [in]                        | 1.25        |
| F [in]                        | 0.80        |
| G [in]                        | 1.38        |
| H [in]                        | 0.69        |
| J [in]                        | 1.30        |
| K Shaft Diameter Maximum [in] | 0.500       |
| K Shaft Diameter Minimum [in] | 0.499       |
| L Holes [Number of Holes]     | 4           |
| L Thru [in]                   | 0.028       |
| M [in]                        | 1.438       |
| N                             | -           |
| Q [in]                        | 0.33        |
| R [in]                        | -           |
| S [in]                        | 0.125       |
| T [in]                        | 4.90        |
| U [in]                        | 0.38        |
| W [in]                        | 0.54        |
| Y [in]                        | 2.50        |
| P - Bolt Count                | 2           |
| P - Bolt Size                 | 3/8 x 2 1/8 |
| P - C'Bore [in]               | 0.62        |
| P - P1 [in]                   | 1.00        |
| P - Thru [in]                 | 0.41        |
| TAP                           | #10-32      |