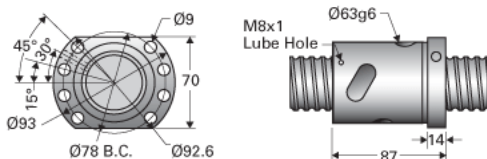
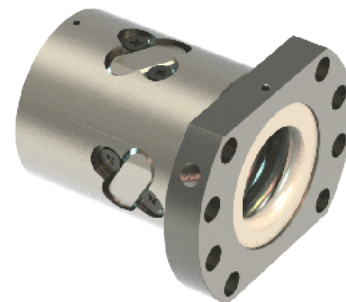


## PowerTrac MPN 40 x 10 RH

Call 800-321-7800 or visit us online at [www.nookindustries.com](http://www.nookindustries.com) to configure and order your PowerTrac MPN 40 x 10 RH today!



### Product Info

Ball Nut Number	MPN10305
Thread Direction	RH

### Details

Ball Circle Diameter [mm]	42.1
Lead [mm]	10
Nominal Ball Diameter [mm]	7.14
Root Diameter [mm]	34.76

### Forces and Torques

Torque to Raise 1 kN [Nm]	1.78
---------------------------	------

### Flange Part Numbers

Flange Part Number	INTEGRAL
--------------------	----------

### Wiper Part Numbers

Wiper Kit Part Number	ELASTOMER
-----------------------	-----------

### Weight

Nut Weight [g]	1182
----------------	------

### Performance Specifications

Lead Accuracy +/- [ $\mu\text{m}/300\text{mm}$ ]	25
Spring Rate x $10^6$ [lb./in.]	0.55
Dynamic Load $C_a$ [kN]	28.4
Static Load $C_o$ [kN]	54.5