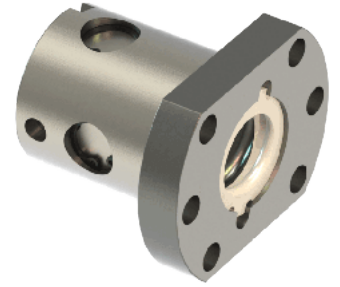
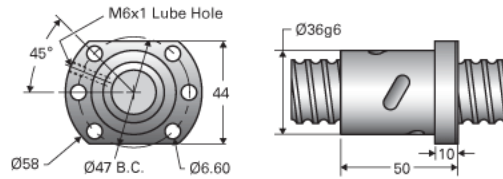


PowerTrac MPN 20 x 5 RH

Call 800-321-7800 or visit us online at www.nookindustries.com to configure and order your PowerTrac MPN 20 x 5 RH today!



Product Info

Ball Nut Number	MPN10332
Thread Direction	RH

Details

Ball Circle Diameter [mm]	20.71
Lead [mm]	5
Nominal Ball Diameter [mm]	3.18
Root Diameter [mm]	17.50

Forces and Torques

Torque to Raise 1 kN [Nm]	0.88
---------------------------	------

Flange Part Numbers

Flange Part Number	INTEGRAL
--------------------	----------

Wiper Part Numbers

Wiper Kit Part Number	ELASTOMER
-----------------------	-----------

Weight

Nut Weight [g]	307
----------------	-----

Performance Specifications

Lead Accuracy +/- [$^{\circ}$ MU*m/300mm]	25
Spring Rate x 10 ⁶ [lb./in.]	0.88
Dynamic Load Ca [kN]	7.2
Static Load Coa [kN]	12.2