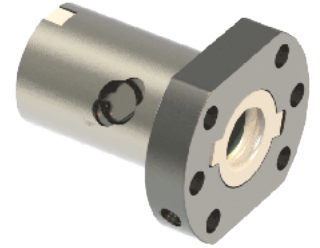
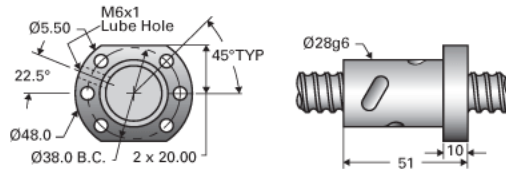


## PowerTrac MPN 16 x 5 RH

Call 800-321-7800 or visit us online at [www.nookindustries.com](http://www.nookindustries.com) to configure and order your PowerTrac MPN 16 x 5 RH today!



### Product Info

Ball Nut Number	MPN11102
Thread Direction	RH

### Details

Ball Circle Diameter [mm]	16
Lead [mm]	5
Nominal Ball Diameter [mm]	3.18
Root Diameter [mm]	12.90

### Forces and Torques

Torque to Raise 1 kN [Nm]	0.88
---------------------------	------

### Flange Part Numbers

Flange Part Number	INTEGRAL
--------------------	----------

### Wiper Part Numbers

Wiper Kit Part Number	ELASTOMER
-----------------------	-----------

### Weight

Nut Weight [g]	190
----------------	-----

### Performance Specifications

Lead Accuracy +/- [*MU*m/300mm]	25
Spring Rate x 10 <sup>6</sup> [lb./in.]	0.22
Dynamic Load Ca [kN]	5.7
Static Load Coa [kN]	8.6