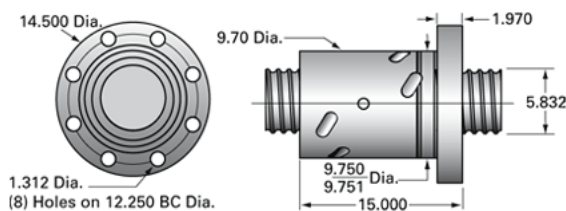
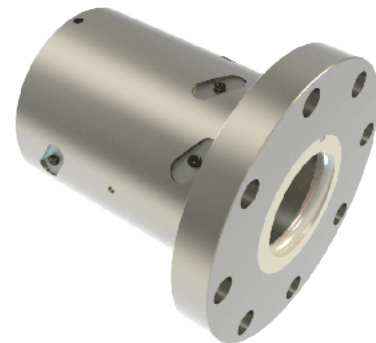


PowerTrac SBN 6000 - 1000 RH, Internal Return, Flange

Call 800-321-7800 or visit us online at www.nookindustries.com to configure and order your PowerTrac SBN 6000 - 1000 RH, Internal Return, Flange



Product Info

Ball Nut Number	SBN10442
Thread Direction	RH

Details

Ball Circle Diameter [in]	6.000
Lead [in]	1.000
Nominal Ball Diameter [in]	1.514
Root diameter [in]	5.232

Dimensions

A [in]

Forces and Torques

Torque to Raise 1 lb. [in-lb]	0.177
-------------------------------	-------

Flange Part Numbers

Flange Part Number	INTEGRAL
--------------------	----------

Wiper Part Numbers

Wiper Kit Part Number	PLASTIC
Wiper Kit Felt Part Number	

Weight

Nut Weight [lb]	225.00
-----------------	--------

Performance Specifications

Lead Accuracy +/- [in./ft.]	0.002
Maximum Adjustable Preload [lb]	
Spring Rate x 10 ⁶ [lb./in.]	
Dynamic Load [lb]	115507
Static Load [lb]	443548