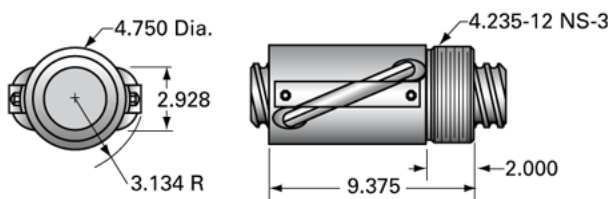


PowerTrac SBN 3000 - 1500 RH, Double Circuit

Call 800-321-7800 or visit us online at www.nookindustries.com to configure and order your PowerTrac SBN 3000 - 1500 RH, Double Circuit today!



Product Info

| | |
|------------------|---------|
| Ball Nut Number | SBN4986 |
| Thread Direction | RH |

Details

| | |
|----------------------------|-------|
| Ball Circle Diameter [in] | 3.000 |
| Lead [in] | 1.500 |
| Nominal Ball Diameter [in] | 0.500 |
| Root diameter [in] | 2.480 |

Dimensions

A [in]

Forces and Torques

| | |
|-------------------------------|-------|
| Torque to Raise 1 lb. [in-lb] | 0.266 |
|-------------------------------|-------|

Flange Part Numbers

| | |
|--------------------|---------|
| Flange Part Number | FLG7575 |
|--------------------|---------|

Wiper Part Numbers

| | |
|----------------------------|---------|
| Wiper Kit Part Number | WKB2661 |
| Wiper Kit Felt Part Number | WKF0458 |

Weight

| | |
|-----------------|-------|
| Nut Weight [lb] | 27.20 |
|-----------------|-------|

Performance Specifications

| | |
|---|--------|
| Lead Accuracy +/- [in./ft.] | 0.008 |
| Maximum Adjustable Preload [lb] | |
| Spring Rate x 10 ⁶ [lb./in.] | |
| Dynamic Load [lb] | 53646 |
| Static Load [lb] | 253617 |