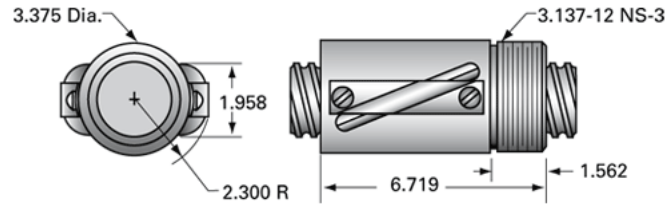


PowerTrac SBN 2250 - 1000 RH, Double Circuit

Call 800-321-7800 or visit us online at www.nookindustries.com to configure and order your PowerTrac SBN 2250 - 1000 RH, Double Circuit today!



Product Info

Ball Nut Number	SBN4555
Thread Direction	RH

Details

Ball Circle Diameter [in]	2.250
Lead [in]	1.000
Nominal Ball Diameter [in]	0.375
Root diameter [in]	1.850

Dimensions

A [in]

Forces and Torques

Torque to Raise 1 lb. [in-lb]	0.177
-------------------------------	-------

Flange Part Numbers

Flange Part Number	FLG7574
--------------------	---------

Wiper Part Numbers

Wiper Kit Part Number	WKB2659
Wiper Kit Felt Part Number	WKF0457

Weight

Nut Weight [lb]	9.00
-----------------	------

Performance Specifications

Lead Accuracy +/- [in./ft.]	0.004
Maximum Adjustable Preload [lb]	
Spring Rate x 10 ⁶ [lb./in.]	
Dynamic Load [lb]	26538
Static Load [lb]	412660