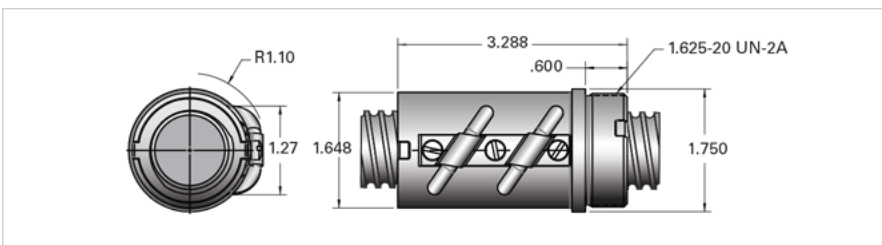


PowerTrac SBN 1250 - 0200 RH, Double Circuit

Call 800-321-7800 or visit us online at www.nookindustries.com to configure and order your PowerTrac SBN 1250 - 0200 RH, Double Circuit today!



Product Info

| | |
|------------------|----------|
| Ball Nut Number | SBN10627 |
| Thread Direction | RH |

Details

| | |
|----------------------------|-------|
| Ball Circle Diameter [in] | 1.250 |
| Lead [in] | 0.200 |
| Nominal Ball Diameter [in] | 0.125 |
| Root diameter [in] | 1.115 |

Dimensions

A [in]

Forces and Torques

| | |
|-------------------------------|-------|
| Torque to Raise 1 lb. [in-lb] | 0.035 |
|-------------------------------|-------|

Flange Part Numbers

| | |
|--------------------|---------|
| Flange Part Number | FLG8283 |
|--------------------|---------|

Wiper Part Numbers

| | |
|----------------------------|-----------|
| Wiper Kit Part Number | ELASTOMER |
| Wiper Kit Felt Part Number | |

Weight

| | |
|-----------------|------|
| Nut Weight [lb] | 1.80 |
|-----------------|------|

Performance Specifications

| | |
|---|-------|
| Lead Accuracy +/- [in./ft.] | 0.004 |
| Maximum Adjustable Preload [lb] | |
| Spring Rate x 10 ⁶ [lb./in.] | |
| Dynamic Load [lb] | 3336 |
| Static Load [lb] | 34688 |