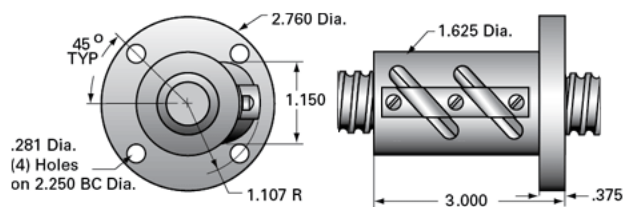


## PowerTrac SBN 1000 - 0250 LH Integral Flange

Call 800-321-7800 or visit us online at [www.nookindustries.com](http://www.nookindustries.com) to configure and order your PowerTrac SBN 1000 - 0250 LH Integral Flange today!



### Product Info

|                  |         |
|------------------|---------|
| Ball Nut Number  | SBN8284 |
| Thread Direction | LH      |

### Details

|                            |       |
|----------------------------|-------|
| Ball Circle Diameter [in]  | 1.000 |
| Lead [in]                  | 0.250 |
| Nominal Ball Diameter [in] | 0.156 |
| Root diameter [in]         | 0.820 |

### Dimensions

A [in]

### Forces and Torques

|                               |       |
|-------------------------------|-------|
| Torque to Raise 1 lb. [in-lb] | 0.044 |
|-------------------------------|-------|

### Flange Part Numbers

|                    |          |
|--------------------|----------|
| Flange Part Number | INTEGRAL |
|--------------------|----------|

### Wiper Part Numbers

|                            |         |
|----------------------------|---------|
| Wiper Kit Part Number      | WKB2651 |
| Wiper Kit Felt Part Number |         |

### Weight

|                 |      |
|-----------------|------|
| Nut Weight [lb] | 1.50 |
|-----------------|------|

### Performance Specifications

|   |       |
|---|-------|
| Lead Accuracy +/- [in./ft.]             | 0.004 |
| Maximum Adjustable Preload [lb]         |       |
| Spring Rate x 10 <sup>6</sup> [lb./in.] |       |
| Dynamic Load [lb]                       | 3224  |
| Static Load [lb]                        | 27826 |