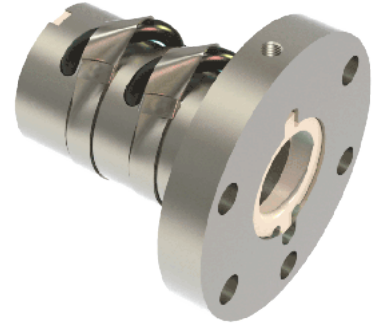
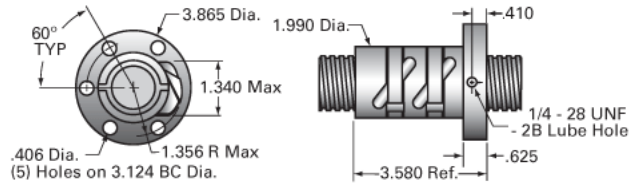


PowerTrac SSN 1250 - 0500 RH, Preloaded, Integral Flange

Call 800-321-7800 or visit us online at www.nookindustries.com to configure and order your PowerTrac SSN 1250 - 0500 RH, Preloaded, Integral Flange



Product Info

Ball Nut Number	SSN0399
Thread Direction	RH

Details

Ball Circle Diameter [in]	1.250
Lead [in]	0.500
Nominal Ball Diameter [in]	0.188
Root diameter [in]	1.050

Forces and Torques

Torque to Raise 1 lb. [in-lb]	0.088
-------------------------------	-------

Flange Part Numbers

Flange Part Number	INTEGRAL
--------------------	----------

Wiper Part Numbers

Wiper Kit Part Number	ELASTOMER
-----------------------	-----------

Weight

Nut Weight [lb]	3.20
-----------------	------

Performance Specifications

Maximum Adjustable Preload [lb]	
Spring Rate x 10 ⁶ [lb./in.]	4.25
Dynamic Load [lb]	1765
Static Load [lb]	11080