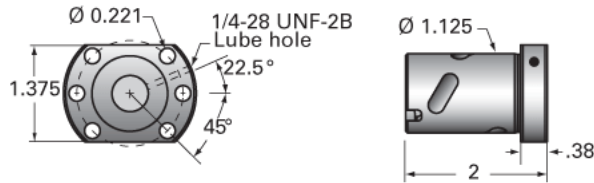
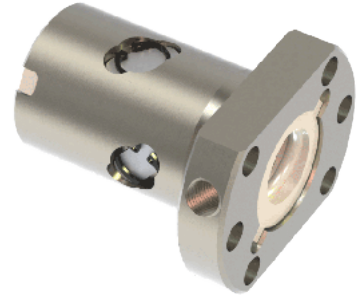


PowerTrac SSN 0631 - 0200 RH, Preloaded Integral Flange Internal

Call 800-321-7800 or visit us online at www.nookindustries.com to configure and order your PowerTrac SSN 0631 - 0200 RH, Preloaded Integral Flange



Product Info

Ball Nut Number	SSN10304
Thread Direction	RH

Details

Ball Circle Diameter [in]	0.631
Lead [in]	0.200
Nominal Ball Diameter [in]	0.125
Root diameter [in]	0.500

Forces and Torques

Torque to Raise 1 lb. [in-lb]	0.035
-------------------------------	-------

Flange Part Numbers

Flange Part Number	INTEGRAL
--------------------	----------

Wiper Part Numbers

Wiper Kit Part Number	ELASTOMER
-----------------------	-----------

Weight

Nut Weight [lb]	0.45
-----------------	------

Performance Specifications

Maximum Adjustable Preload [lb]	
Spring Rate x 10 ⁶ [lb./in.]	1.50
Dynamic Load [lb]	450
Static Load [lb]	2115