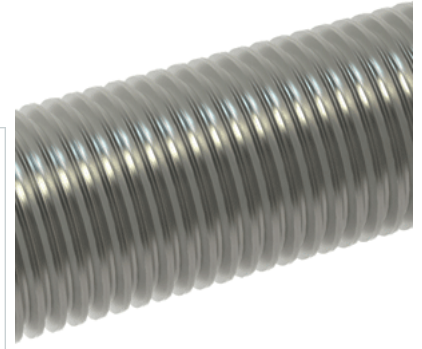
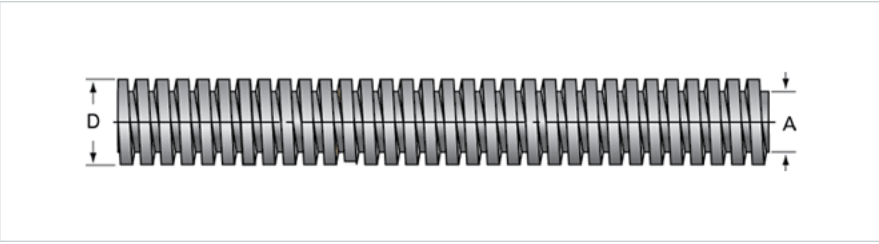


PowerAC 1"-10 RS

Call 800-321-7800 or visit us online at www.nookindustries.com to configure and order your PowerAC 1"-10 RS today!



Product Info	
Screw Code	110-RS
Thread Direction	RH
Screw Material	300 Series Stainless
Details	
Lead [in]	0.100
Starts	1
Pitch [in]	0.100
Turns Per Inch	10
Threads per Inch	10
Thread Code	110
Form	2C
End Code for Types 1,2,3,5 [* Journals may show tracings of the thread]	20
End Code for Type 4 [* Journals may show tracings of the thread]	12
Dimensions	
A - Root Diameter Minimum [in]	0.857
D - Nominal Rod Diameter [in]	1.000
Part Numbers	
3 ft. Part Number	91110
6 ft. Part Number	92110
12 ft. Part Number	93110
20 ft. Part Number	
Performance Specifications	
Lead Accuracy +/- [in/in]	0.0003
Weight	
Screw Weight [lb./ft.]	2.10