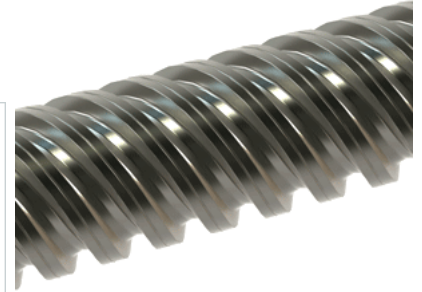
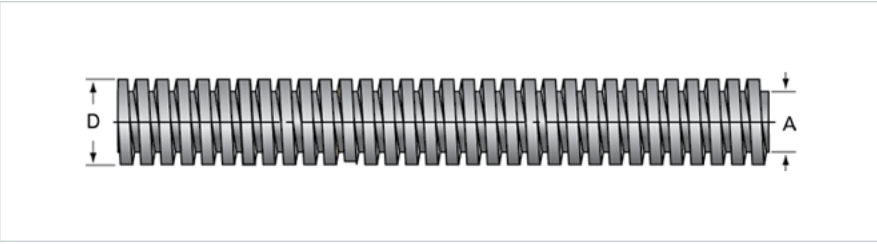


## PowerAC 3/8"-2 RS

Call 800-321-7800 or visit us online at [www.nookindustries.com](http://www.nookindustries.com) to configure and order your PowerAC 3/8"-2 RS today!



<b>Product Info</b>	
Screw Code	037-RS
Thread Direction	RH
Screw Material	300 Series Stainless
<b>Details</b>	
Lead [in]	0.500
Starts	4
Pitch [in]	0.125
Turns Per Inch	2
Threads per Inch	8
Thread Code	037
Form	Stub
End Code for Types 1,2,3,5 [* Journals may show tracings of the thread]	7
End Code for Type 4 [* Journals may show tracings of the thread]	4
<b>Dimensions</b>	
A - Root Diameter Minimum [in]	0.278
D - Nominal Rod Diameter [in]	0.375
<b>Part Numbers</b>	
3 ft. Part Number	91037
6 ft. Part Number	92037
12 ft. Part Number	
20 ft. Part Number	
<b>Performance Specifications</b>	
Lead Accuracy +/- [in/in]	0.0003
<b>Weight</b>	
Screw Weight [lb./ft.]	0.29