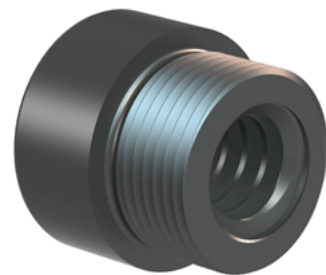


Plastic Trapezoidal Nut 30902

Call 800-321-7800 or visit us online at www.nookindustries.com to configure and order your Plastic Trapezoidal Nut 30902 today!



Product Info	
Part Number	30902
Thread Direction	RH
Type	Plastic
Details	
Diameter	16
Lead [mm]	4
Starts	1
Pitch [mm]	4
Lash (Maximum Axial in) [mm]	0.24
Nominal Rod Diameter	16
Thread Code	902
Dimensions	
B [mm]	26.0
C [mm]	28.0
E [mm]	13.00
F (n) Dia. [mm]	(4) 7.00
F BCD [mm]	23.00
G [mm]	14.0
H [mm]	66.0
J [mm]	M25x1.5
Forces and Torques	
Torque to Raise 1 kN [Nm]	1.374
Flange Part Numbers	
Flange Part Number	72002
Weight	
Flange Weight [kg]	0.31
Nut Weight [g]	18
Performance Specifications	
Efficiency [%]	46
Lead Accuracy +/- [$^{\circ}$ MU*m/25mm]	6.25
Dynamic Load Capacity [N]	4412
Static Load Capacity [N]	4412