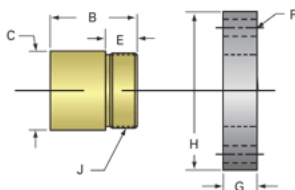
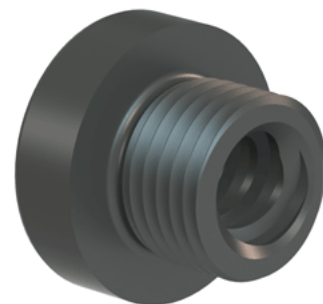


Plastic Trapezoidal Nut 30900

Call 800-321-7800 or visit us online at www.nookindustries.com to configure and order your Plastic Trapezoidal Nut 30900 today!



Product Info	
Part Number	30900
Thread Direction	RH
Type	Plastic
Details	
Diameter	10
Lead [mm]	3
Starts	2
Pitch [mm]	1.5
Lash (Maximum Axial in) [mm]	0.13
Nominal Rod Diameter	10
Thread Code	900
Dimensions	
B [mm]	16.0
C [mm]	18.0
E [mm]	10.00
F (n) Dia. [mm]	(4) 7.00
F BCD [mm]	25.50
G [mm]	11.0
H [mm]	42.0
J [mm]	M15x1
Forces and Torques	
Torque to Raise 1 kN [Nm]	0.966
Flange Part Numbers	
Flange Part Number	72001
Weight	
Flange Weight [kg]	0.09
Nut Weight [g]	4.5
Performance Specifications	
Efficiency [%]	49
Lead Accuracy +/- [*MU*m/25mm]	6.25
Dynamic Load Capacity [N]	1723
Static Load Capacity [N]	1723