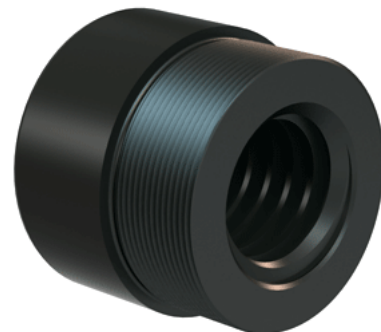


Plastic Acme Nut 1 1/4"-4 RH

Call 800-321-7800 or visit us online at www.nookindustries.com to configure and order your Plastic Acme Nut 1 1/4"-4 RH today!



Product Info

Part Number	30124
Thread Direction	RH
Type	Plastic

Details

Lead [in]	0.250
Starts	1
Pitch [in]	0.250
Turns Per Inch	4
Lash (Maximum Axial) [in]	0.011
Nominal Rod Diameter [in]	1.250
Threads per Inch	4
Thread Code	124
Form	2C

Dimensions

B [in]	1.75
C [in]	2.12
E [in]	0.81
F (n) Dia. [in]	(4) .397
F BCD [in]	3.440
G [in]	0.83
H [in]	4.20
J [in]	1.967-18

Forces and Torques

Torque to Raise 1 lb. [in-lb]	0.099
-------------------------------	-------

Flange Part Numbers

Flange No-Lash Part Number	73420
Flange Part Number	FLG7572

Weight

Flange Weight [lb]	3.19
Nut Weight [lb]	0.19

Performance Specifications

Efficiency [%]	40
Lead Accuracy +/- [in/in]	0.0003
Dynamic Load Capacity [lb]	3906
Static Load Capacity [lb]	3906