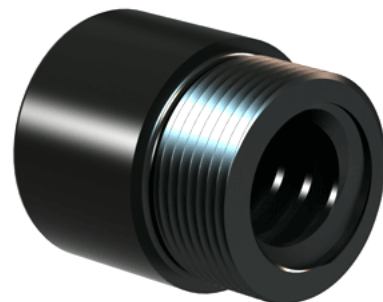


Plastic Acme Nut 3/4"-6 RH

Call 800-321-7800 or visit us online at www.nookindustries.com to configure and order your Plastic Acme Nut 3/4"-6 RH today!



Product Info	
Part Number	30076
Thread Direction	RH
Type	Plastic
Details	
Lead [in]	0.166
Starts	1
Pitch [in]	0.166
Turns Per Inch	6
Lash (Maximum Axial) [in]	0.008
Nominal Rod Diameter [in]	0.750
Threads per Inch	6
Thread Code	076
Form	2C
Dimensions	
B [in]	1.25
C [in]	1.13
E [in]	0.50
F (n) Dia. [in]	(4) .266
F BCD [in]	2.090
G [in]	0.53
H [in]	2.63
J [in]	1.000-18
Forces and Torques	
Torque to Raise 1 lb. [in-lb]	0.061
Flange Part Numbers	
Flange No-Lash Part Number	73262
Flange Part Number	70262
Weight	
Flange Weight [lb]	0.78
Nut Weight [lb]	0.03
Performance Specifications	
Efficiency [%]	43
Lead Accuracy +/- [in/in]	0.0003
Dynamic Load Capacity [lb]	1406
Static Load Capacity [lb]	1406