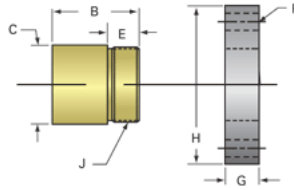
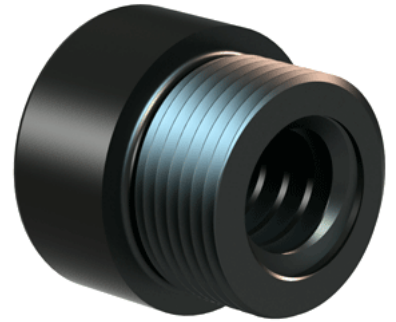


## Plastic Acme Nut 5/8"-8 RH

Call 800-321-7800 or visit us online at [www.nookindustries.com](http://www.nookindustries.com) to configure and order your Plastic Acme Nut 5/8"-8 RH today!



<b>Product Info</b>	
Part Number	30068
Thread Direction	RH
Type	Plastic
<b>Details</b>	
Lead [in]	0.125
Starts	1
Pitch [in]	0.125
Turns Per Inch	8
Lash (Maximum Axial) [in]	0.008
Nominal Rod Diameter [in]	0.625
Threads per Inch	8
Thread Code	068
Form	2C
<b>Dimensions</b>	
B [in]	1.00
C [in]	1.12
E [in]	0.50
F (n) Dia. [in]	(4) .266
F BCD [in]	2.090
G [in]	0.53
H [in]	2.60
J [in]	.937-16
<b>Forces and Torques</b>	
Torque to Raise 1 lb. [in-lb]	0.049
<b>Flange Part Numbers</b>	
Flange No-Lash Part Number	
Flange Part Number	FLG7570
<b>Weight</b>	
Flange Weight [lb]	0.77
Nut Weight [lb]	0.03
<b>Performance Specifications</b>	
Efficiency [%]	40
Lead Accuracy +/- [in/in]	0.0003
Dynamic Load Capacity [lb]	976
Static Load Capacity [lb]	976