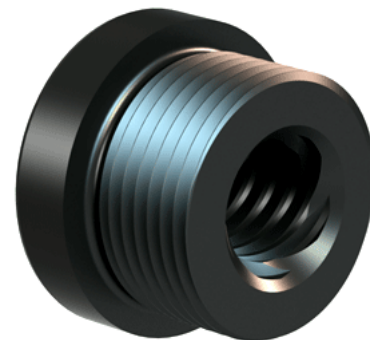


Plastic Acme Nut 1/2"-2 RH

Call 800-321-7800 or visit us online at www.nookindustries.com to configure and order your Plastic Acme Nut 1/2"-2 RH today!



Product Info	
Part Number	30052
Thread Direction	RH
Type	Plastic
Details	
Lead [in]	0.500
Starts	5
Pitch [in]	0.100
Turns Per Inch	2
Lash (Maximum Axial) [in]	0.006
Nominal Rod Diameter [in]	0.500
Threads per Inch	10
Thread Code	052
Form	Stub
Dimensions	
B [in]	0.75
C [in]	1.12
E [in]	0.50
F (n) Dia. [in]	(4) .266
F BCD [in]	2.090
G [in]	0.53
H [in]	2.60
J [in]	.937-16
Forces and Torques	
Torque to Raise 1 lb. [in-lb]	0.107
Flange Part Numbers	
Flange No-Lash Part Number	
Flange Part Number	FLG7570
Weight	
Flange Weight [lb]	0.77
Nut Weight [lb]	0.03
Performance Specifications	
Efficiency [%]	75
Lead Accuracy +/- [in/in]	0.0003
Dynamic Load Capacity [lb]	625
Static Load Capacity [lb]	625