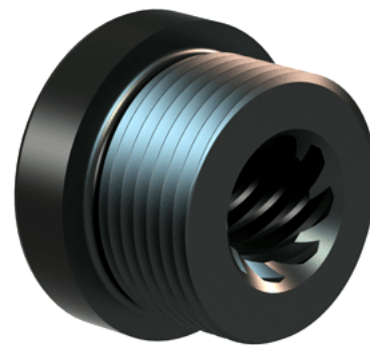


Plastic Acme Nut 1/2"-1 RH

Call 800-321-7800 or visit us online at www.nookindustries.com to configure and order your Plastic Acme Nut 1/2"-1 RH today!



Product Info

Part Number	30051
Thread Direction	RH
Type	Plastic

Details

Lead [in]	1.000
Starts	8
Pitch [in]	0.125
Turns Per Inch	1
Lash (Maximum Axial) [in]	0.007
Nominal Rod Diameter [in]	0.500
Threads per Inch	8
Thread Code	051
Form	Stub

Dimensions

B [in]	0.75
C [in]	1.12
E [in]	0.50
F (n) Dia. [in]	(4) .266
F BCD [in]	2.090
G [in]	0.53
H [in]	2.60
J [in]	.937-16

Forces and Torques

Torque to Raise 1 lb. [in-lb]	0.106
-------------------------------	-------

Flange Part Numbers

Flange No-Lash Part Number	
Flange Part Number	FLG7570

Weight

Flange Weight [lb]	0.77
Nut Weight [lb]	0.03

Performance Specifications

Efficiency [%]	75
Lead Accuracy +/- [in/in]	0.0003
Dynamic Load Capacity [lb]	625
Static Load Capacity [lb]	625