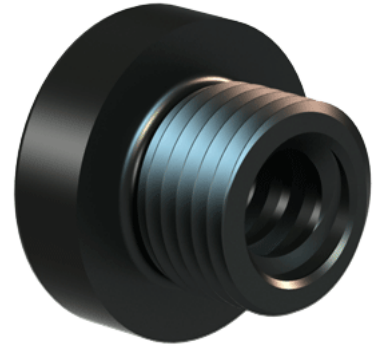
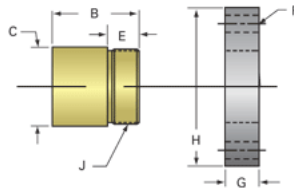


Plastic Acme Nut 3/8"-8 RH

Call 800-321-7800 or visit us online at www.nookindustries.com to configure and order your Plastic Acme Nut 3/8"-8 RH today!



Product Info

| | |
|------------------|---------|
| Part Number | 30038 |
| Thread Direction | RH |
| Type | Plastic |

Details

| | |
|---------------------------|-------|
| Lead [in] | 0.125 |
| Starts | 1 |
| Pitch [in] | 0.125 |
| Turns Per Inch | 8 |
| Lash (Maximum Axial) [in] | 0.009 |
| Nominal Rod Diameter [in] | 0.375 |
| Threads per Inch | 8 |
| Thread Code | 038 |
| Form | Stub |

Dimensions

| | |
|-----------------|----------|
| B [in] | 0.62 |
| C [in] | 0.68 |
| E [in] | 0.38 |
| F (n) Dia. [in] | (4) .270 |
| F BCD [in] | 1.250 |
| G [in] | 0.41 |
| H [in] | 1.61 |
| J [in] | .562-18 |

Forces and Torques

| | |
|-------------------------------|-------|
| Torque to Raise 1 lb. [in-lb] | 0.037 |
|-------------------------------|-------|

Flange Part Numbers

| | |
|----------------------------|-------|
| Flange No-Lash Part Number | |
| Flange Part Number | 70160 |

Weight

| | |
|--------------------|------|
| Flange Weight [lb] | 0.23 |
| Nut Weight [lb] | 0.01 |

Performance Specifications

| | |
|----------------------------|--------|
| Efficiency [%] | 54 |
| Lead Accuracy +/- [in/in] | 0.0003 |
| Dynamic Load Capacity [lb] | 351 |
| Static Load Capacity [lb] | 351 |