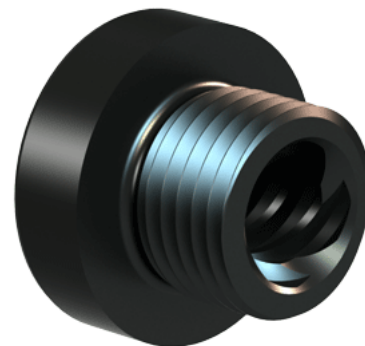


Plastic Acme Nut 3/8"-2 RH

Call 800-321-7800 or visit us online at www.nookindustries.com to configure and order your Plastic Acme Nut 3/8"-2 RH today!



Product Info

Part Number	30037
Thread Direction	RH
Type	Plastic

Details

Lead [in]	0.500
Starts	4
Pitch [in]	0.125
Turns Per Inch	2
Lash (Maximum Axial) [in]	0.009
Nominal Rod Diameter [in]	0.375
Threads per Inch	8
Thread Code	037
Form	Stub

Dimensions

B [in]	0.62
C [in]	0.68
E [in]	0.38
F (n) Dia. [in]	(4) .270
F BCD [in]	1.250
G [in]	0.41
H [in]	1.61
J [in]	.562-18

Forces and Torques

Torque to Raise 1 lb. [in-lb]	0.101
-------------------------------	-------

Flange Part Numbers

Flange No-Lash Part Number	
Flange Part Number	70160

Weight

Flange Weight [lb]	0.23
Nut Weight [lb]	0.01

Performance Specifications

Efficiency [%]	79
Lead Accuracy +/- [in/in]	0.0003
Dynamic Load Capacity [lb]	351
Static Load Capacity [lb]	351