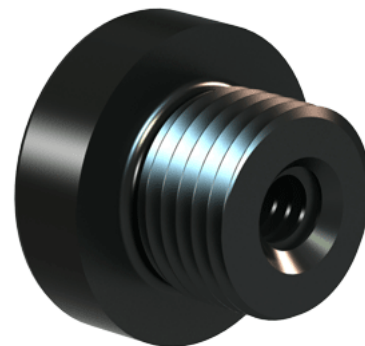


Plastic Acme Nut 1/4"-20 RH

Call 800-321-7800 or visit us online at www.nookindustries.com to configure and order your Plastic Acme Nut 1/4"-20 RH today!



Product Info	
Part Number	30020
Thread Direction	RH
Type	Plastic
Details	
Lead [in]	0.050
Starts	1
Pitch [in]	0.050
Turns Per Inch	20
Lash (Maximum Axial) [in]	0.006
Nominal Rod Diameter [in]	0.250
Threads per Inch	20
Thread Code	020
Form	2G
Dimensions	
B [in]	0.62
C [in]	0.68
E [in]	0.38
F (n) Dia. [in]	(4) .266
F BCD [in]	1.250
G [in]	0.41
H [in]	1.61
J [in]	.562-18
Forces and Torques	
Torque to Raise 1 lb. [in-lb]	0.020
Flange Part Numbers	
Flange No-Lash Part Number	
Flange Part Number	70160
Weight	
Flange Weight [lb]	0.23
Nut Weight [lb]	0.06
Performance Specifications	
Efficiency [%]	40
Lead Accuracy +/- [in/in]	0.0003
Dynamic Load Capacity [lb]	156
Static Load Capacity [lb]	156