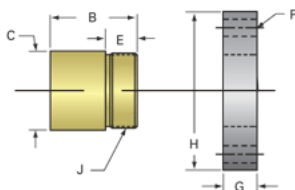
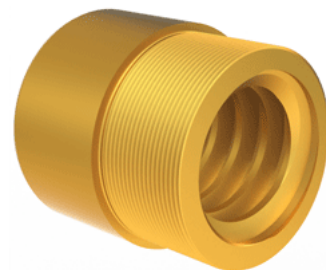


Bronze Trapezoidal Nut 20907

Call 800-321-7800 or visit us online at www.nookindustries.com to configure and order your Bronze Trapezoidal Nut 20907 today!



Product Info	
Part Number	20907
Thread Direction	RH
Type	Bronze
Details	
Diameter	65
Lead [mm]	12
Starts	1
Pitch [mm]	12
Lash (Maximum Axial in) [mm]	0.42
Nominal Rod Diameter	65
Thread Code	907
Dimensions	
B [mm]	85.0
C [mm]	85.0
E [mm]	35.00
F (n) Dia. [mm]	(4) 17.00
F BCD [mm]	120.00
G [mm]	36.0
H [mm]	150.0
J [mm]	M80x2
Forces and Torques	
Torque to Raise 1 kN [Nm]	5.775
Flange Part Numbers	
Flange Part Number	72007
Weight	
Flange Weight [kg]	3.30
Nut Weight [g]	2100
Performance Specifications	
Efficiency [%]	33
Lead Accuracy +/- [*MU*m/25mm]	6.25
Dynamic Load Capacity [N]	145651
Static Load Capacity [N]	466084